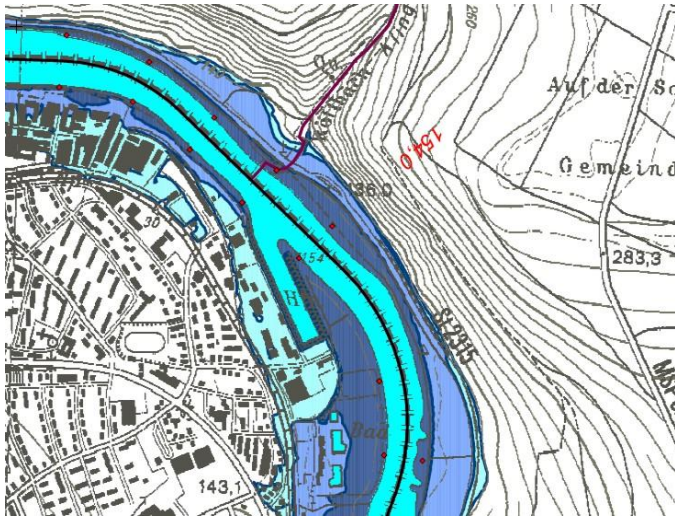


HYDRAULIC CALCULATIONS OF THE MAIN RIVER



Hydraulic Calculations of the Main River, Germany

Services provided

Preparation of digital terrain model (DTM), hydraulic modelling, water level calculations

Technical details

Water body length 160 km:
km 134-219, 259-316, 376-395
Preparation of a digital terrain model on the basis of laser scan data
Modelling of locks, dams, etc.
Hydro-technical calculation with a two-dimensional flow model
Identification of flood areas
Preparation of flood risk maps

