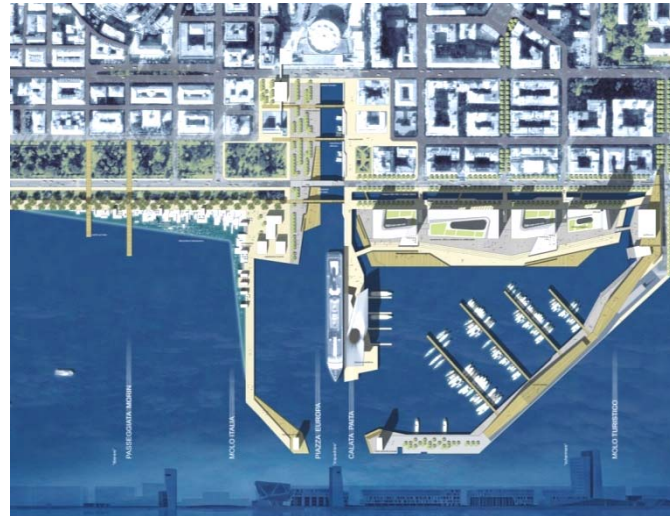
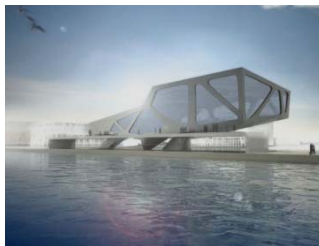
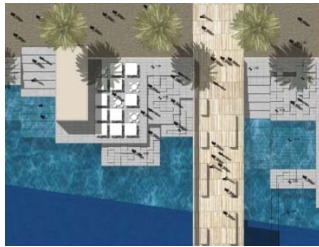


# CENTRAL WATERFRONT, LA SPEZIA



**Redevelopment of the central waterfront in La Spezia, Italy**

**Project period**  
2006 - 2007

**Construction cost**  
200 M € approx.

**Services provided**  
International competition in two phase (2nd phase in cooperation)

**Technical details**  
Detailed design of the port area (Calata Paita),  
Gross floor area approx. 50 000 m<sup>2</sup>  
Architectural design of the landing stage for cruise ships, the jetty, a multifunctional complex with a gross floor area of approx. 30 000 m<sup>2</sup> as well as a hotel with integrated conference centre and event hall for approx. 750 persons; planning of external works and forecourt areas