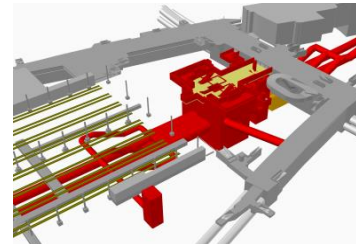
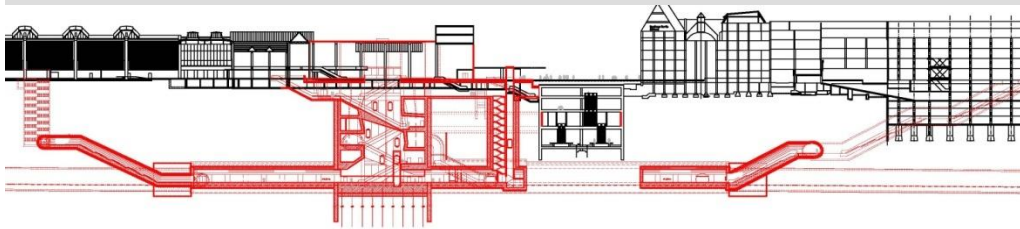


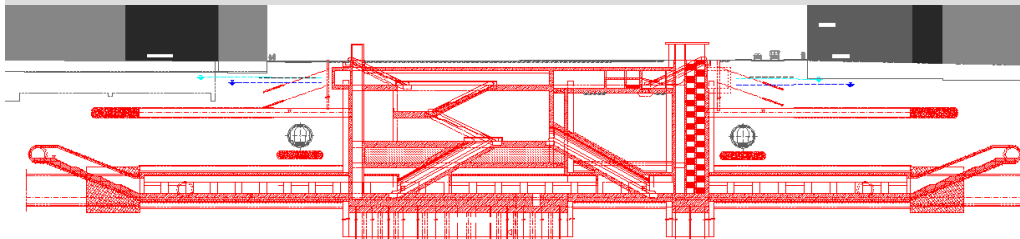
2ND PRINCIPAL RAPID TRANSIT LINE TUNNEL, MUNICH



Underpassing Underground Station U1 / U2



Station at Central Railway Station



Marienhof Halt



Alignment

2nd Principal Rapid Transit Line, Munich, Germany - Underground Tunnel Driving Technique - Stations

Project period
2004 - 2016

Services provided

Basic investigations, preliminary, design and approval planning, tendering

Technical details

Overall length of the 2nd Principal Rapid Transit Line approx. 10 km
Tunnel lengths approx. 2 x 8 km
3 underground stations, partly constructed in shotcrete method and in underground tunnel driving technique (Hauptbahnhof station, Marienhof and Ostbahnhof halts)
Use of special measures such as icing, grouting, pipe umbrellas