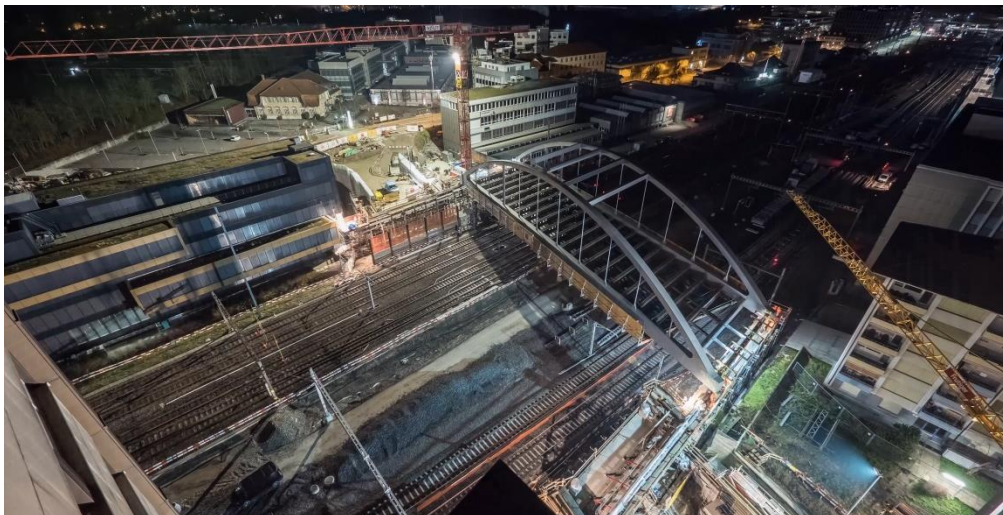
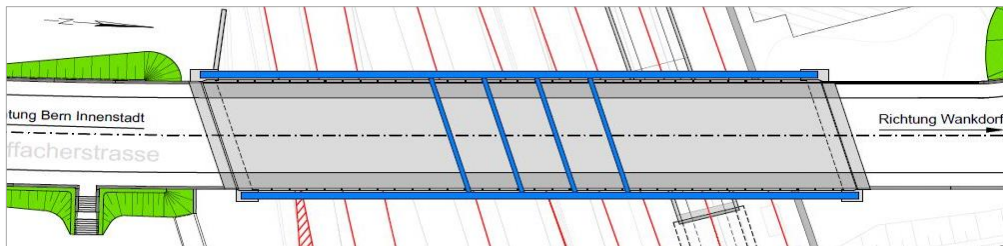
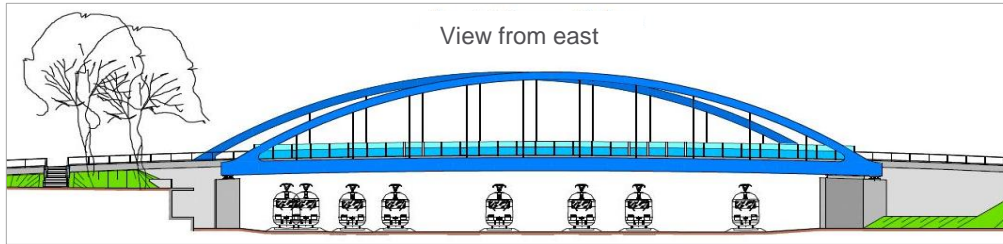


STAUFFACHERSTRASSE BRIDGE, BERNE-WYLERFELD



Stauffacherstrasse Road Bridge Replacement Structure, Deconcentration of Track Installations, Berne-Wylerfeld, Switzerland

Project period
2012 - 2018

Services provided

Overall planning for the project planning and structural design, temporary works and progress of works

Technical details

The replacement structure of the inner-city road bridge, single-span steel braced arch bridge with reinforced concrete carriageway, composite steel
Span: 69.0 m
Width of bridge: 14.0 m
Foundation of the abutments and wing walls on large-scale bored piles