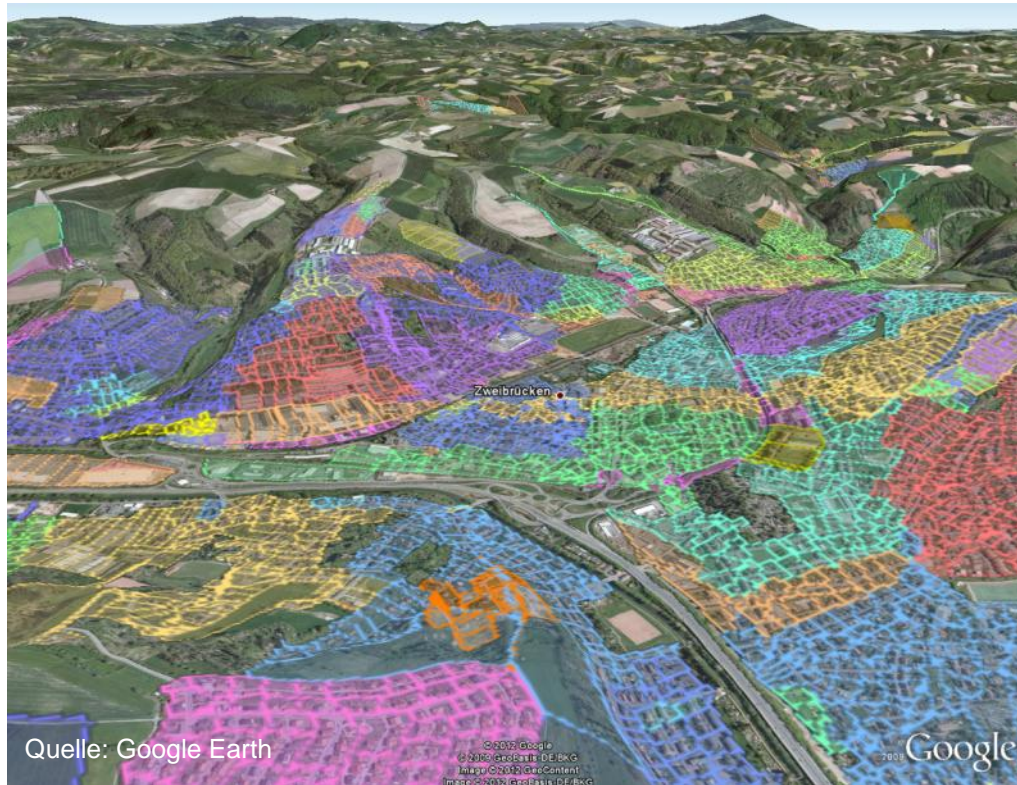


# SEWERAGE MASTER PLAN, ZWEIBRÜCKEN



## Hydraulic and Pollution Load Calculation as well as Sewage Disposal Concept for the City of Zweibrücken, Germany

### Services provided

- Establishment of a sewer database
- Pollution load calculation
- Sewerage master plan
- Outer catchment area documentation
- Wastewater disposal concept

### Technical details

- Area of investigation approx.: 1 600 ha
- 40 000 inhabitants
- Sewer network length approx.: 270 km
- 7 500 reaches
- 100 partial catchment areas

