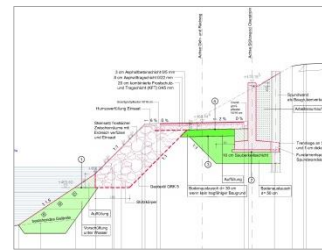
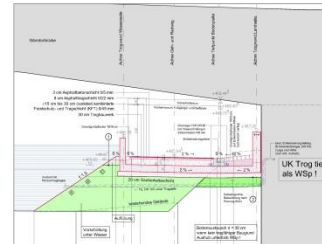
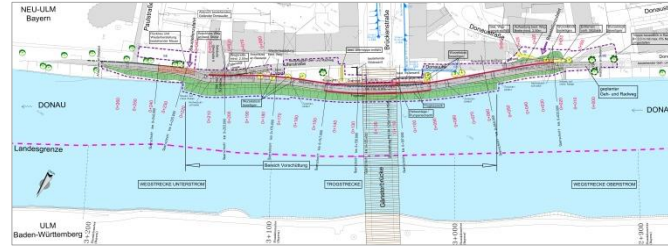


PEDESTRIAN AND CYCLE UNDERPASS, NEU-ULM



Visualization of the building

Pedestrian and Cycle Underpass beneath Gänstor Bridge, Neu-Ulm, Germany

Services provided

Preliminary, design and approval planning of project planning and technical equipment to assistance in award of contract, visualisation, specialist environmental preliminary analysis

Technical details

New footpath and cycle track on Danube embankment as underpass beneath Gänstor bridge. Length approx. 260 m, difference in height 4.5 m, retaining walls (130 m). Trough structure (60 m) with lifting plant for trough drainage. Construction on banking in the water body.